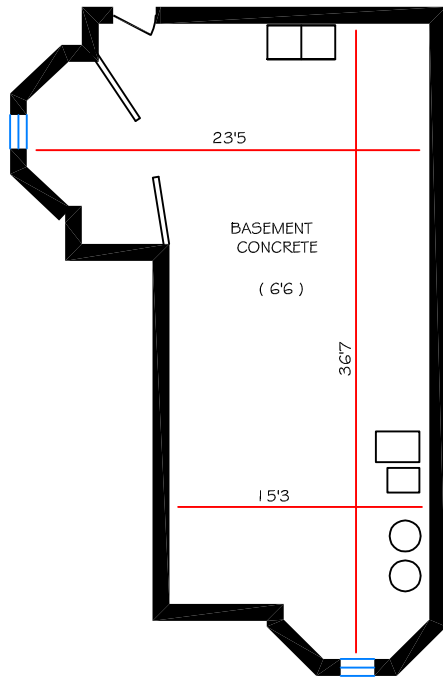


20 Beaconsfield Avenue

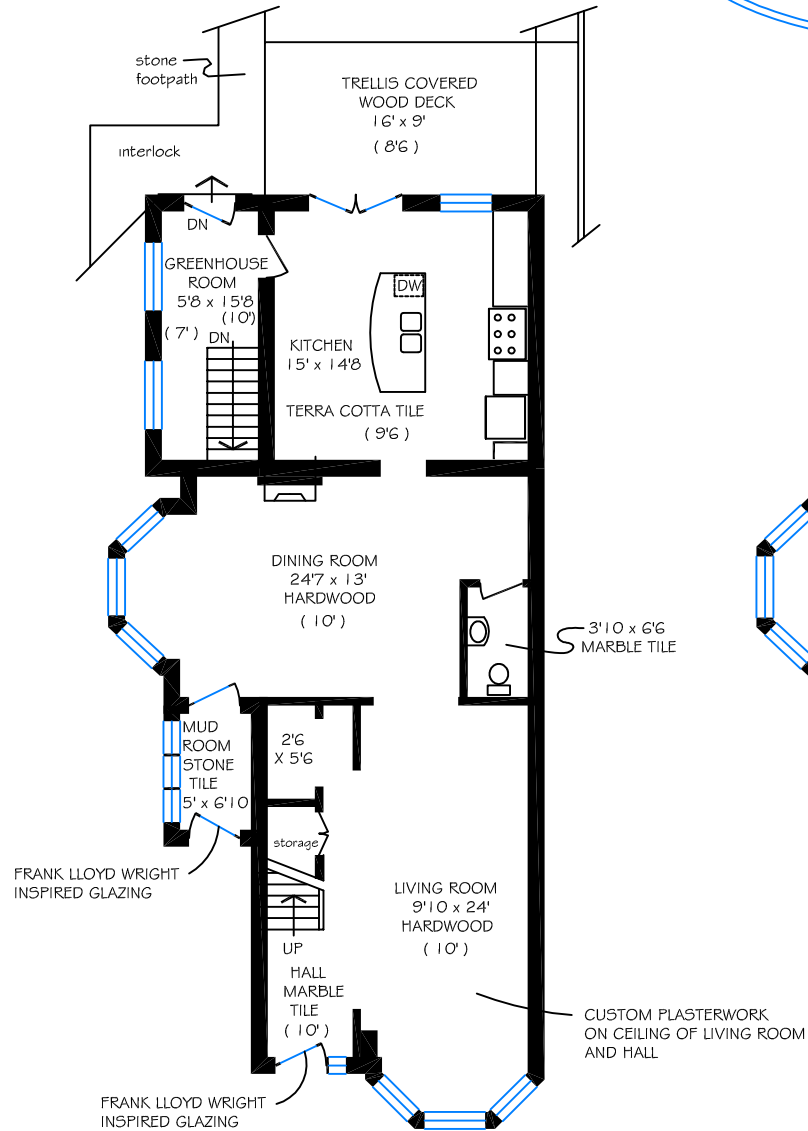
Total above above ground floor area is 2200 sq ft



No warranty is made or implied as to the accuracy of the information contained herein
(10') refers to ceiling height

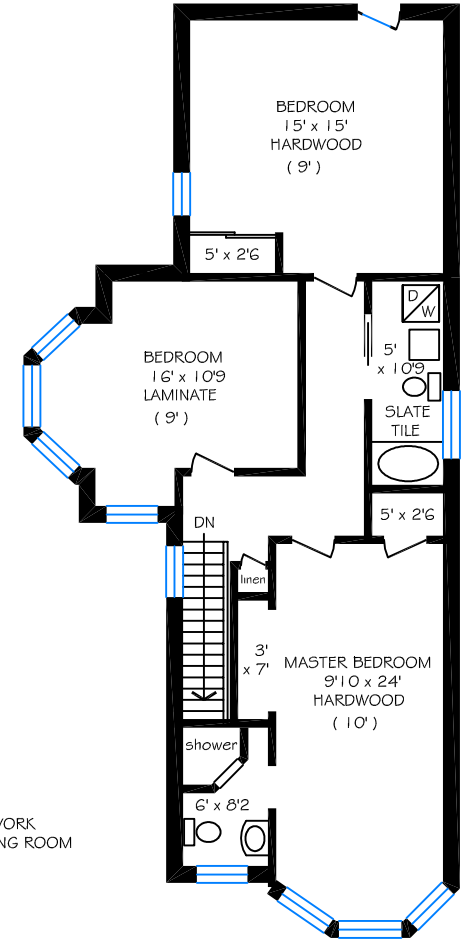


BASEMENT FLOOR = 760 SQ FT



GROUND FLOOR = 1170 SQ FT

Kevin Alvarez, Sales Representative
Royal LePage Real Estate Services
Tel (416) 205-0355



SECOND FLOOR = 1030 SQ FT