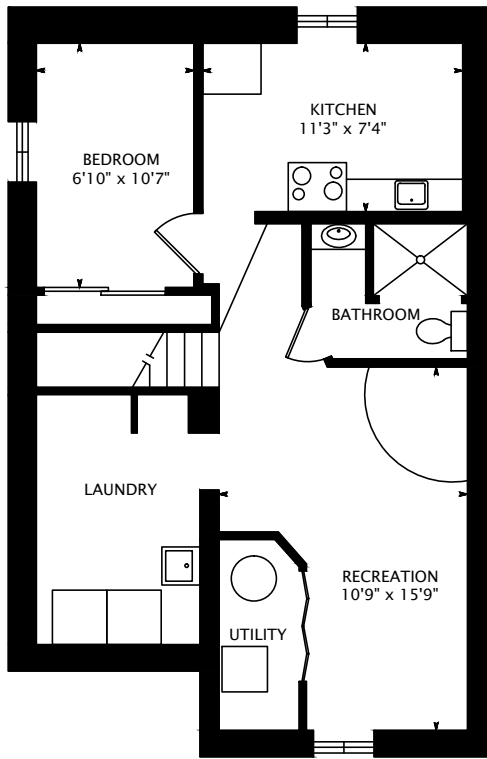
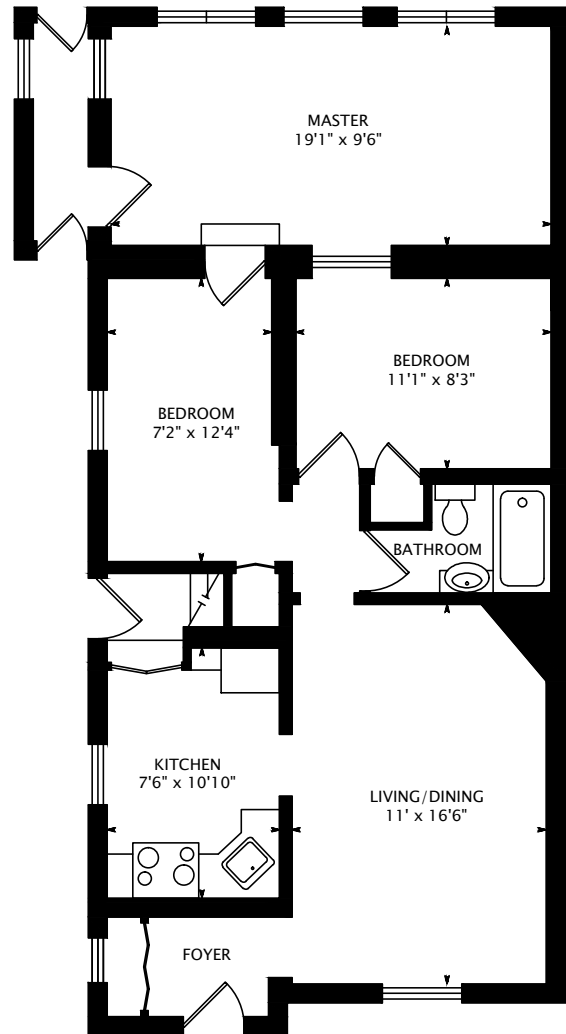


# 19 BICKNELL AVENUE



LOWER FLOOR  
633 SQUARE FEET



MAIN FLOOR  
950 SQUARE FEET

950 SQUARE FEET  
+ 633 SQUARE FEET BELOW GRADE

interactive tour: [toursler.com/19-bicknell-ave](http://toursler.com/19-bicknell-ave)



DATE: SEPTEMBER 8, 2016

DIMENSIONS, AREAS, LAYOUTS AND DETAILS ARE APPROXIMATE AND SHOULD BE CONSIDERED ILLUSTRATIVE ONLY.

KEVIN ALVAREZ, SALES REPRESENTATIVE  
ROYAL LEPAGE SIGNATURE REALTY, BROKERAGE  
DIRECT: (416) 317-7754, OFFICE: (416) 205-0355  
EMAIL: [kevin@kevinvalvarez.ca](mailto:kevin@kevinvalvarez.ca), WEB: [kevinvalvarez.ca](http://kevinvalvarez.ca)