

Kevin Alvarez, Sales Representative
 Royal LePage Real Estate Services
 Tel (416) 762-8255

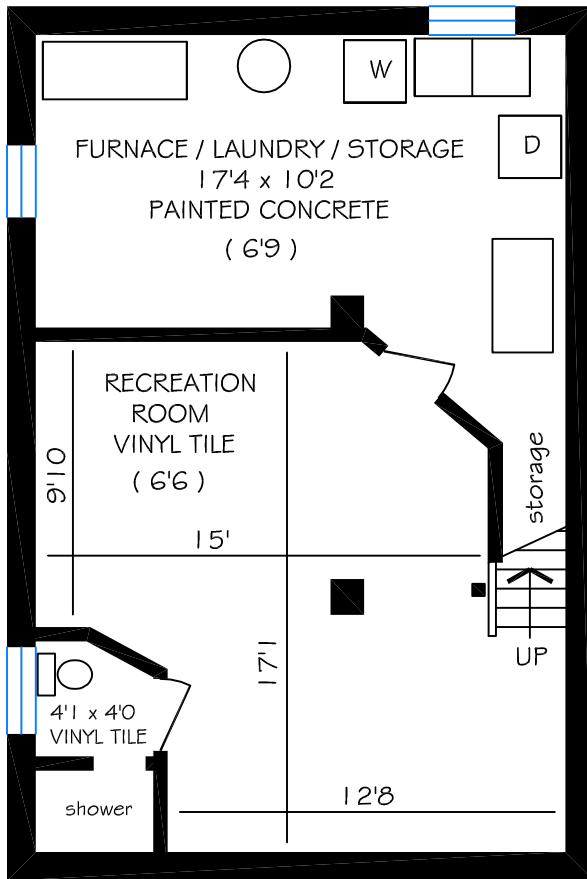
521 Durie Street

Total above ground floor area is 1400 sq ft

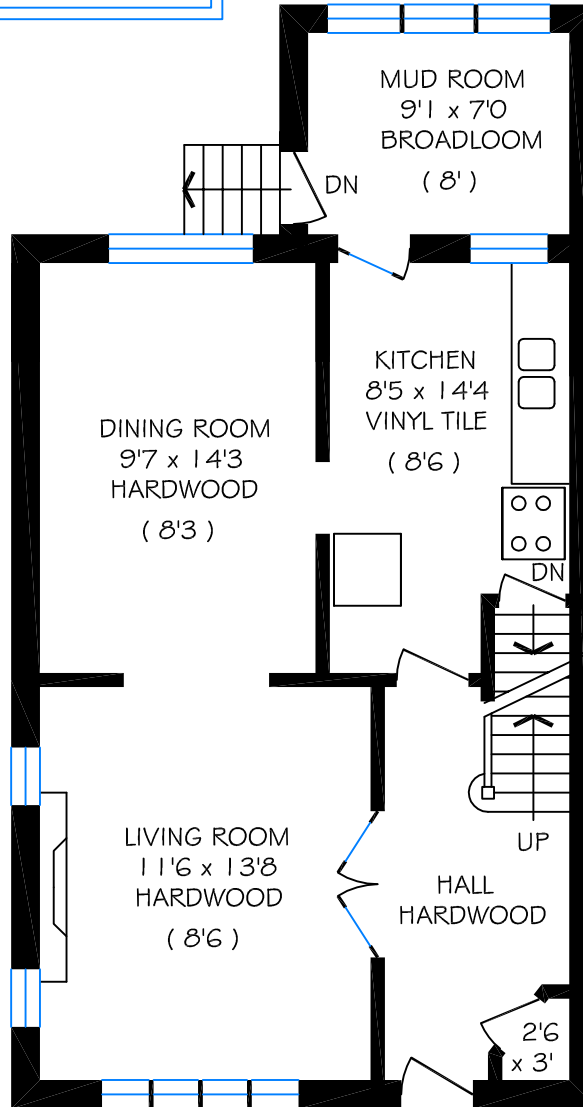


No warranty is made or implied as to the accuracy of the information contained herein.

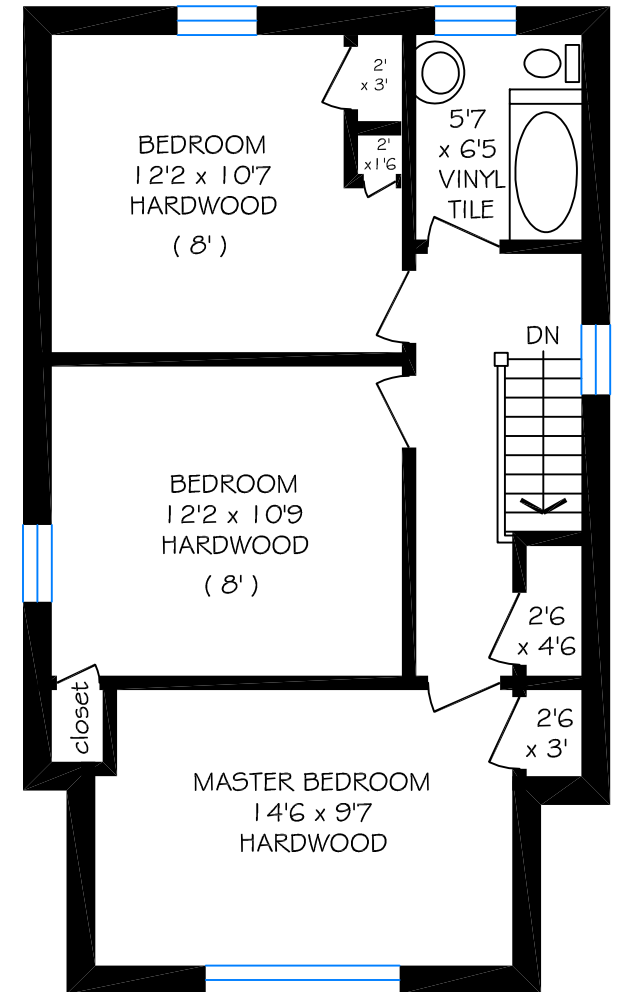
(8'6) refers to ceiling height



BASEMENT FLOOR = 620 SQ FT



GROUND FLOOR = 720 SQ FT



SECOND FLOOR = 680 SQ FT